

12 July 2018

Statutory Notification

Wightman Road and Alroy Road N8: Proposed Safety and Accessibility Improvements

Dear Resident or Business,

We recently carried out an independent transport study of the Green Lanes areas dubbed the 'Green Lanes Area Transport Study' with the aim to develop measures to help address the traffic and safety concerns identified within the study area which covered parts of Haringay, St. Ann's and Severn Sisters wards. For information on the Green Lanes Area Transport Study, please visit the study webpage on the council's website link: <http://www.haringey.gov.uk/transport/green-lanes-area-transport-study>.

One of the issues identified by the study was the reduced footway widths along Wightman Road and Alroy Road owing to footway parking and other obstructions on the footways such as household refuse bins, overgrown foliage and redundant street furniture. These obstructions reduce the available space for pedestrians particularly affecting people with mobility impairment and people walking with buggies, making walking a less attractive transport mode along this corridor. The existing footway widths along Wightman Road and Alroy Road are approximately 2.1m to 2.5m (this includes space taken by the footway parking), which is less than the desirable minimum for pedestrians. Footway parking can also result in damages to the footway increasing maintenance requirements and in some instances creating trip hazards for pedestrians.

We therefore propose moving the footway parking on to the road. However due to the narrow nature of the carriageway, parking can only be accommodated on one side of the road.

The main measures are as follows and are detailed on the accompanying plans.

1. Use of chicanes to alternate parking along Wightman Road. As well as freeing up the footway for pedestrians, this will also help reduce traffic speeds and improve general road safety.
2. Removal of pedestrian refuge islands along Wightman Road, which currently creates pinch points for cyclists, and improvements of some of the existing pedestrian crossing facilities.
3. Footway build outs at the junctions with the 'ladder roads' to improve visibility and reduce crossing widths for pedestrians.
4. Additional raised tables along Wightman Road to help lower traffic speed along this corridor.
5. Provision of on-street planting areas and trees to help improve the street scene appearance.

Impact of proposals on Parking

An independent parking occupancy surveys in September 2017 along Wightman Road/ Alroy Road and the ladder roads showed average maximum occupancy rate of 73%. Thus, about 2337 of the 3210 designated parking/ loading spaces on the surveyed streets were being used at the busiest times.

Wightman Road and Alroy road currently have about 229 designated parking/ loading spaces, 163 (71%) of these will be retained.

We want to hear from you!

An important part of this consultation is to receive your feedback, which will inform the decision on whether we proceed with the scheme or if any amendments are required. This notification letter marks the start of a five-week consultation period during which we welcome your views using the enclosed Freepost feedback card.

Alternately, email your views to us at frontline.consultation@haringey.gov.uk. Should you wish to object to the proposal please include reasons.

Please ensure that your comments reach us as soon as possible and no later than 17 August 2018.

Drop-in Events

We will also be holding 'drop in' sessions where you can meet with officers and find out more about the proposals. The dates and locations of these sessions are below:

- Wednesday 18 July, from 6:45-8:45pm at the St Paul's Parish Hall, Wightman Road N8
- Saturday 21 July, from 12-2pm at the Turkish Cypriot Community Association, 628-630 Green Lanes, N8 0SD

Thank you for your interest and we look forward to hearing from you.

Yours faithfully,

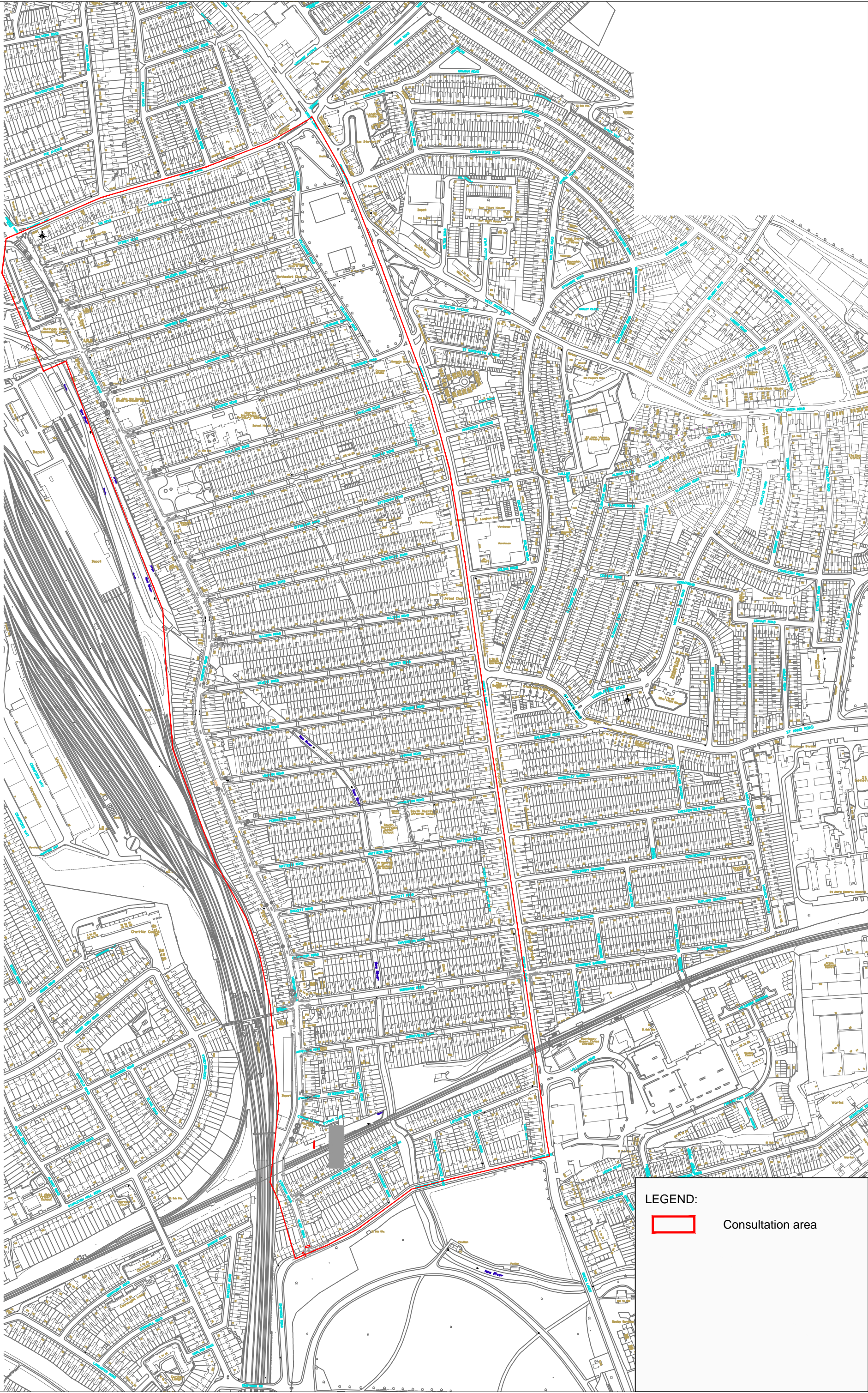


Sustainable Transport: Highways Engineering


Sustainable Transport
Level 1 South
River Park House
225 High Road, Wood Green
London N22 8HQ

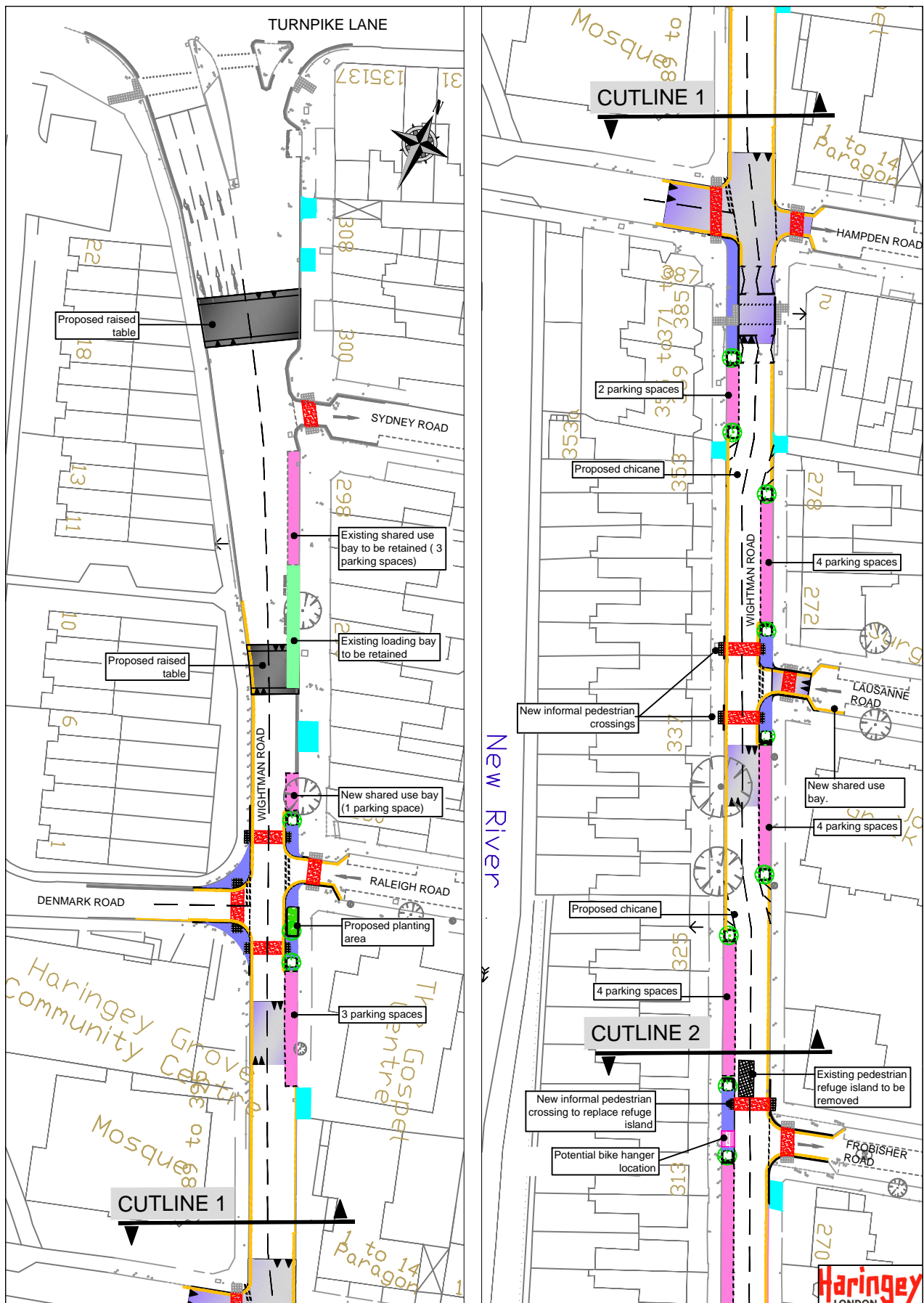
020 8489 1000

www.haringey.gov.uk



LEGEND:

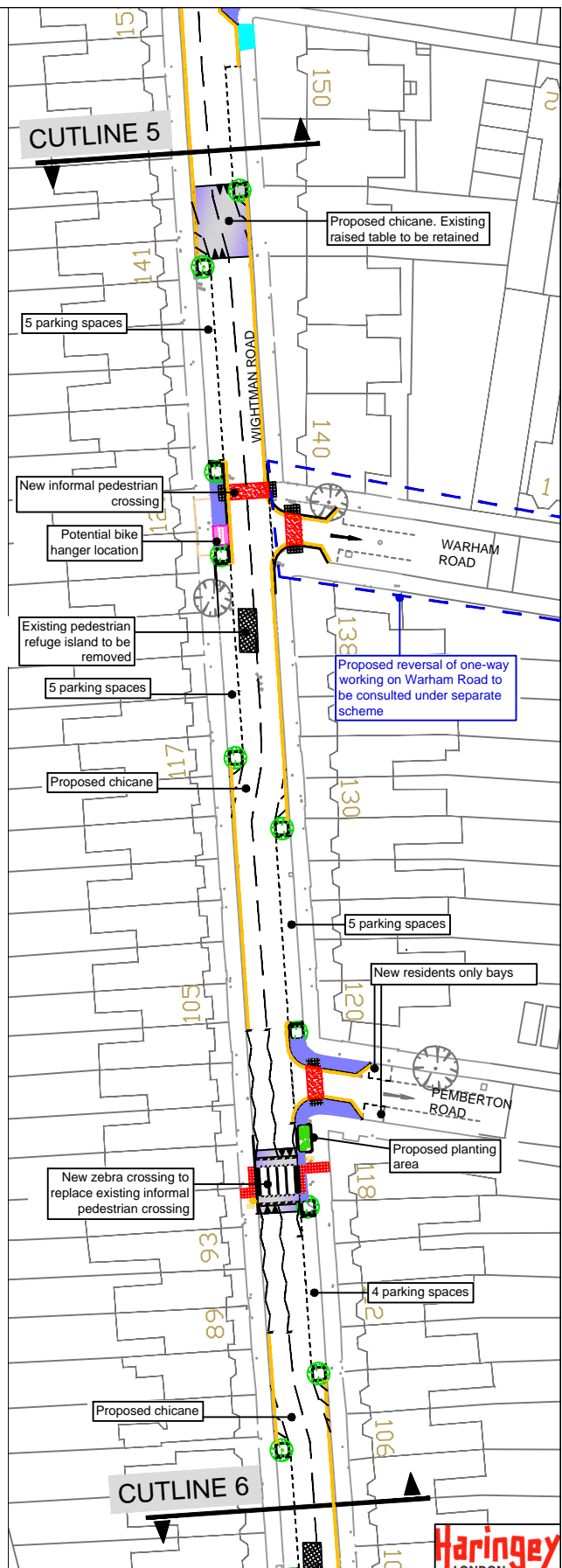
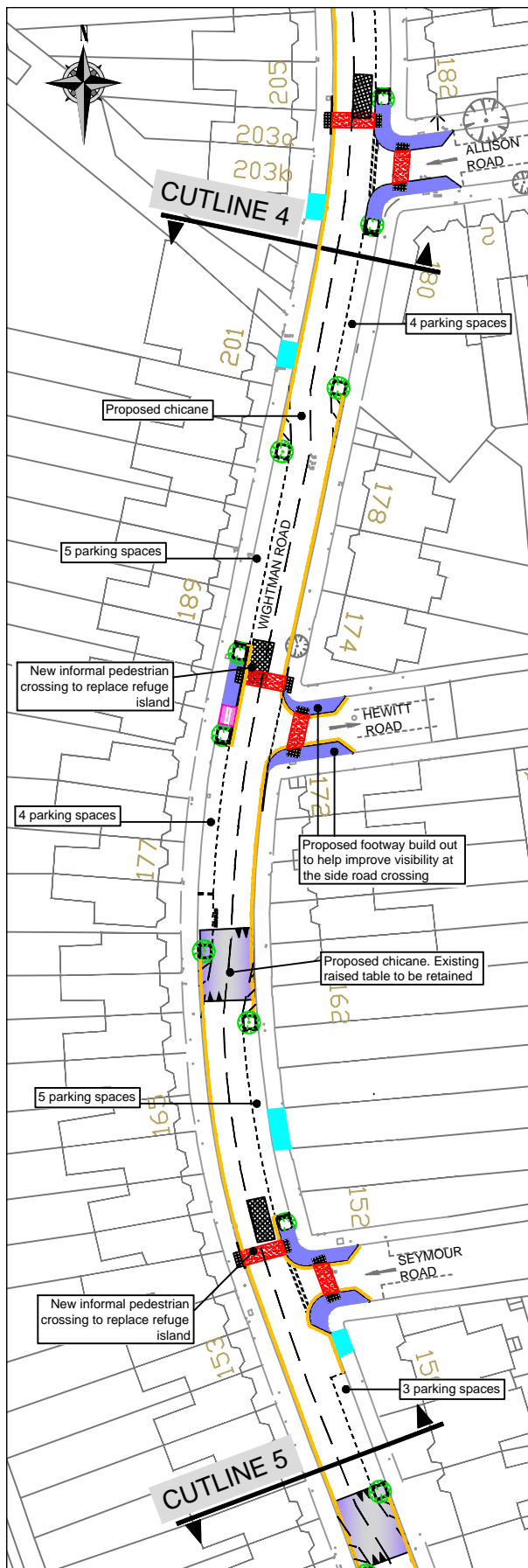
 Consultation area



WIGHTMAN ROAD/ ALROY ROAD IMPROVEMENTS (Sheet 1 of 5)

LEGEND

	Existing raised table		Existing footway build-out to be cut back and reclaimed carriageway space utilised for parking		Shared use bay (Residents and Pay and Display)		Proposed single/ double yellow lines or existing to be remarked
	New raised table		Existing pedestrian crossing		Loading bay		Existing one-way system of traffic flow
	Footway build-out		New informal pedestrian crossing		Free parking space. 4hrs max, no return within 2 hours		Potential location for a bike hanger
	Red anti-skid surfacing to highlight informal pedestrian crossing point		New planting area		Existing parking or loading bay to be retained		Proposed chicane
	Existing pedestrian refuge island to be removed		Existing tree to be retained		Residents only parking bay		
	Existing vehicle crossover to be retained		Existing tree to be removed		Existing single/ double yellow lines		
			New tree				

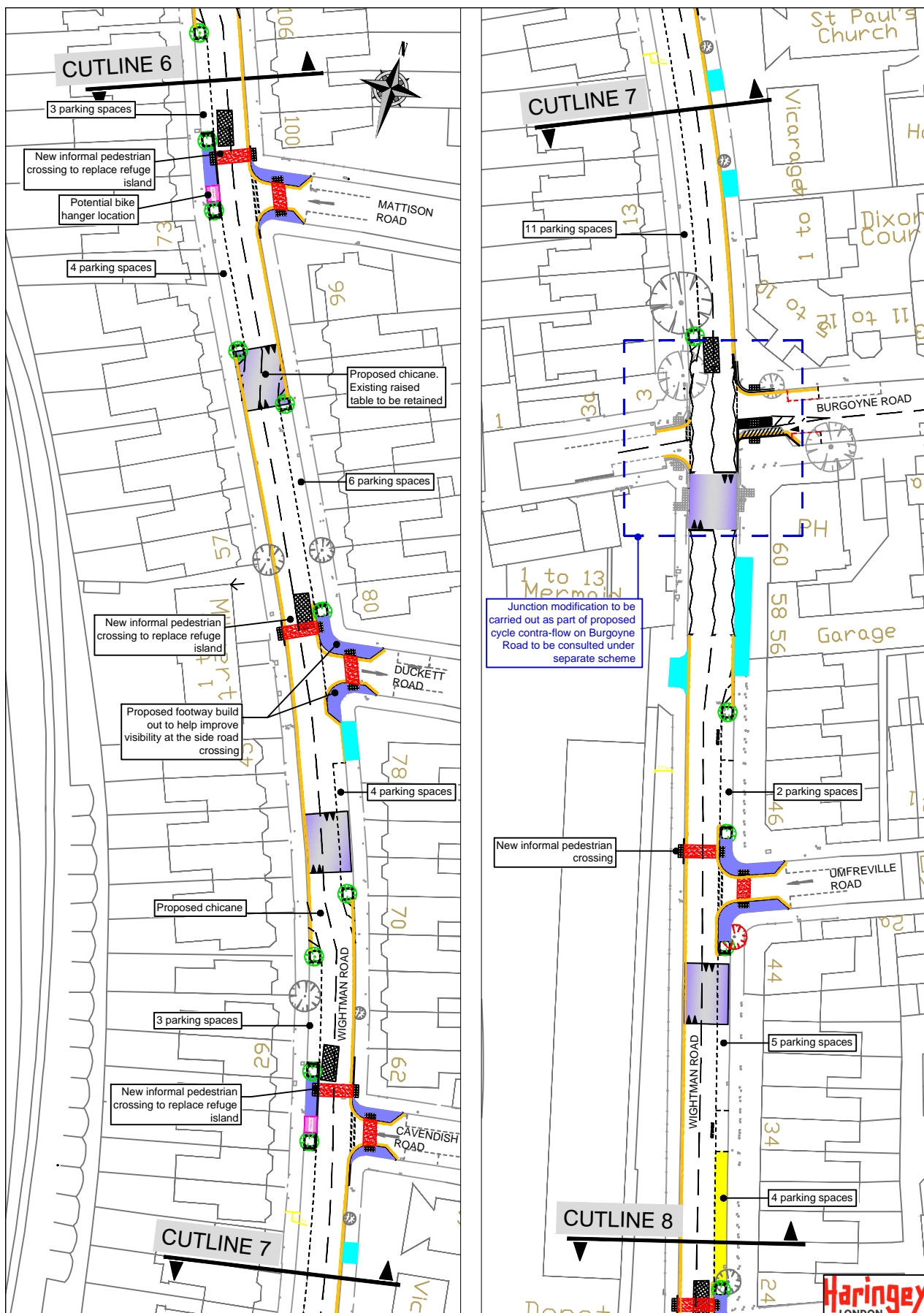


LEGEND

	Existing raised table		Existing footway build-out to be cut back and reclaimed carriageway space utilised for parking		Shared use bay (Residents and Pay and Display)		Proposed single/double yellow lines or existing to be remarked
	New raised table		Existing pedestrian crossing		Loading bay		Existing one-way system of traffic flow
	Footway build-out		New informal pedestrian crossing		Free parking space. 4hrs max, no return within 2 hours		Potential location for a bike hanger
	Red anti-skid surfacing to highlight informal pedestrian crossing point		New planting area		Existing parking or loading bay to be retained		Proposed chicane
	Existing pedestrian refuge island to be removed		Existing tree to be retained		Residents only parking bay		
	Existing vehicle crossover to be retained		Existing tree to be removed		Existing single/double yellow lines		
			New tree				

WIGHTMAN ROAD/ ALROY ROAD IMPROVEMENTS (Sheet 3 of 5)

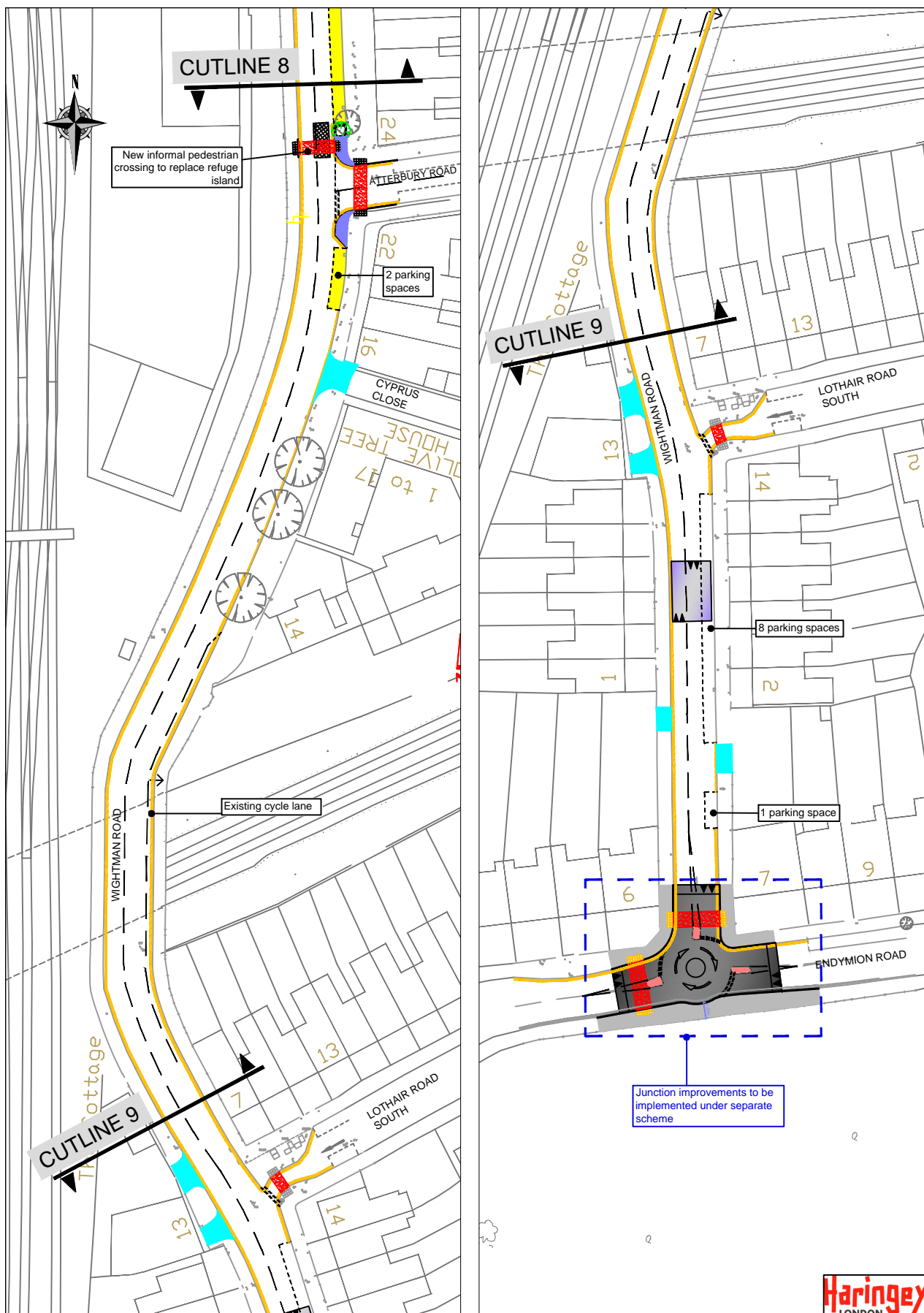
Haringey
LONDON



WIGHTMAN ROAD/ ALROY ROAD IMPROVEMENTS (Sheet 4 of 5)

LEGEND

	Existing raised table		Existing footway build-out to be cut back and reclaimed carriageway space utilised for parking		Shared use bay (Residents and Pay and Display)		Proposed single/ double yellow lines or existing to be remarked
	New raised table		Existing pedestrian crossing		Loading bay		Existing one-way system of traffic flow
	Footway build-out		New informal pedestrian crossing		Free parking space. 4hrs max, no return within 2 hours		Potential location for a bike hanger
	Red anti-skid surfacing to highlight informal pedestrian crossing point		New planting area		Existing parking or loading bay to be retained		Proposed chicane
	Existing pedestrian refuge island to be removed		Existing tree to be retained		Residents only parking bay		
	Existing vehicle crossover to be retained		Existing tree to be removed		Existing single/ double yellow lines		
			New tree				



WIGHTMAN ROAD/ ALROY ROAD IMPROVEMENTS (Sheet 5 of 5)

LEGEND

	Existing raised table		Existing footway build-out to be cut back and reclaimed carriageway space utilised for parking		Shared use bay (Residents and Pay and Display)		Proposed single/ double yellow lines or existing to be remarked
	New raised table		Existing pedestrian crossing		Loading bay		Existing one-way system of traffic flow
	Footway build-out		New informal pedestrian crossing		Free parking space. 4hrs max, no return within 2 hours		Potential location for a bike hanger
	Red anti-skid surfacing to highlight informal pedestrian crossing point		New planting area		Existing parking or loading bay to be retained		Proposed chicane
	Existing pedestrian refuge island to be removed		Existing tree to be retained		Residents only parking bay		
	Existing vehicle crossover to be retained		Existing tree to be removed		Existing single/ double yellow lines		
			New tree				